



# 得豐實業有限公司

Dfwisdom Industrial CO., LTD

## ZP3 吸盤系列 Series

### 選用型號

①
②
③  
 ZP3 - 015 UM N

① 吸盤直徑 mm		② 吸盤形狀	
015	Φ1.5	U	平型
02	Φ2	UM	帶肋平型
035	Φ3.5	B	風琴型 (皺摺)
04	Φ4	③ 吸盤材質	
06	Φ6	N	丁腈橡膠NBR
08	Φ8	S	矽橡膠
10	Φ10	GN	抗靜電丁腈橡膠
13	Φ13	GS	抗靜電矽橡膠
16	Φ16		



### 規格特性 Specifications Characteristics

標示	材質	硬度	使用溫度範圍	顏色	膠體阻抗值
N	丁腈橡膠NBR	A55 / S	-26 °C ~ 120 °C	黑色	/
S	矽橡膠	A55 / S	-60 °C ~ 250 °C	乳白色	
GN	抗靜電丁腈橡膠	A70 / S	-26 °C ~ 120 °C	黑色紅點	$10^5 \sim 10^7 \Omega / \text{cm}^3$
GS	抗靜電矽橡膠	A55 / S	-60 °C ~ 250 °C	黑色紅點	$10^5 \sim 10^7 \Omega / \text{cm}^3$

形狀 \ 直徑	直徑									
	Φ1.5	Φ2	Φ3.5	Φ4	Φ6	Φ8	Φ10	Φ13	Φ16	
U 平型	●	●	●	---	---	---	---	---	---	
UM 帶肋平型	---	---	---	●	●	●	●	●	●	
B 風琴型 (皺摺)	---	---	---	●	●	●	●	●	●	



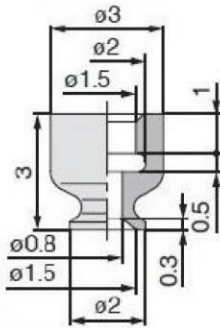
得豐實業有限公司

Dfwisdom Industrial CO., LTD

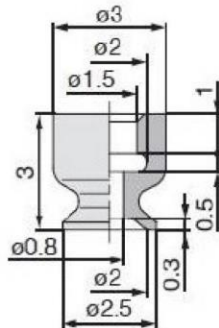
## ZP3 吸盤系列 Series

### 安裝尺寸 Installation Dimensions

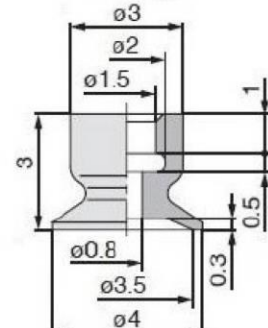
ZP3-015U (重量: 0.1 g)



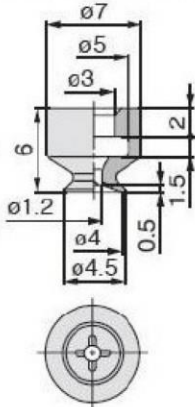
ZP3-02U (重量: 0.1 g)



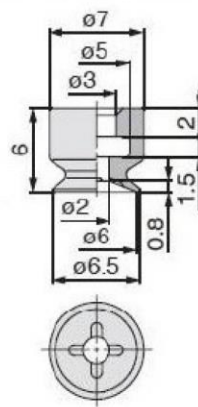
ZP3-035U (重量: 0.1 g)



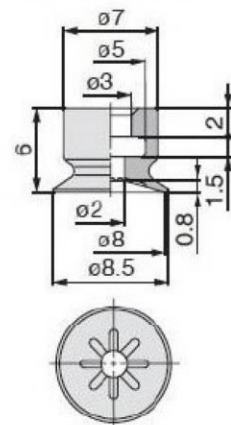
ZP3-04UM (重量: 0.3 g)



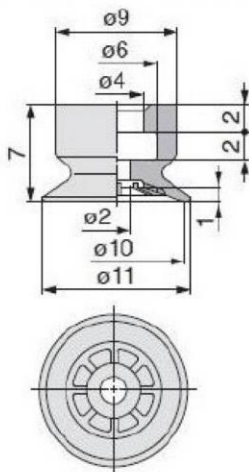
3-06UM (重量: 0.3 g)



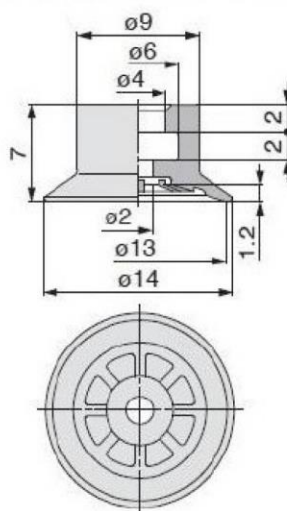
ZP3-08UM (重量: 0.3 g)



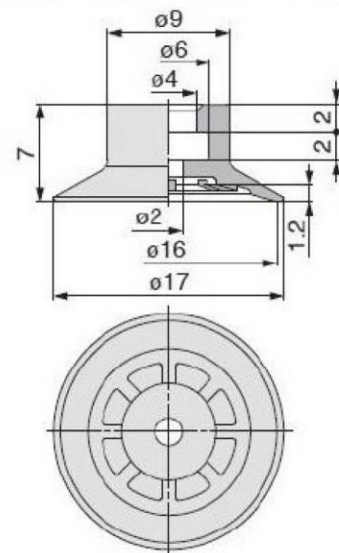
ZP3-10UM (重量: 0.6 g)



ZP3-13UM (重量: 0.7 g)



ZP3-16UM (重量: 0.8 g)





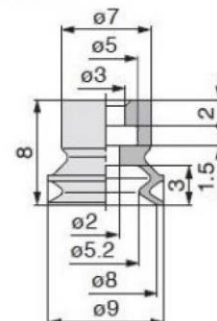
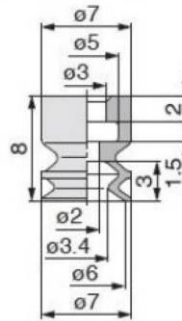
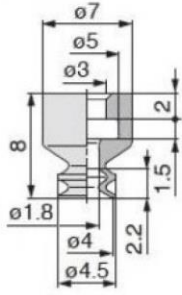
# 得豐實業有限公司

Dfwisdom Industrial CO., LTD

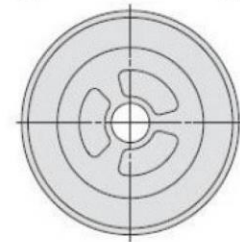
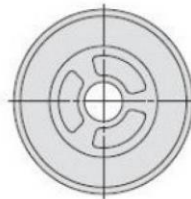
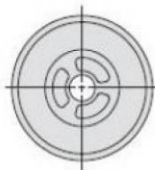
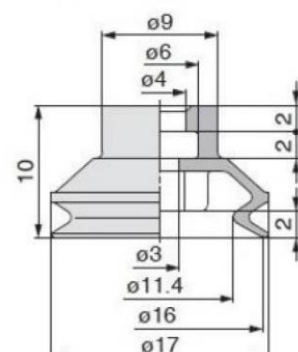
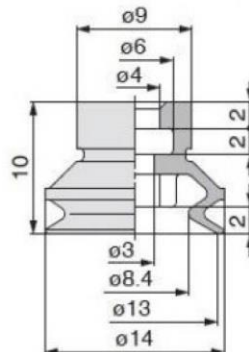
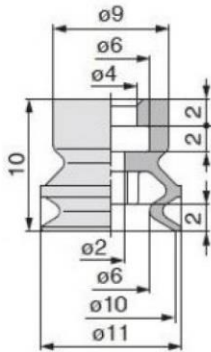
## ZP3 吸盤系列 Series

### 安裝尺寸 Installation Dimensions

ZP3-04B (重量: 0.3 g)   ZP3-06B (重量: 0.3 g)   ZP3-08B (重量: 0.4 g)



ZP3-10B (重量: 0.8 g)   ZP3-13B (重量: 1.0 g)   ZP3-16B (重量: 1.1 g)



### 製作連接吸盤零件之尺寸

適用吸盤

04UM/06UM/08UM/04B/06B/08B

適用吸盤

10UM/13UM/16UM/10B/13B/16B

